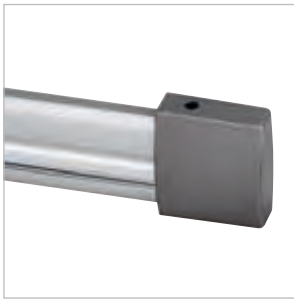
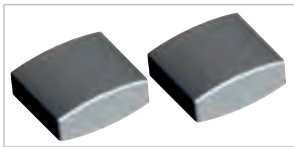


Easytec II® Track

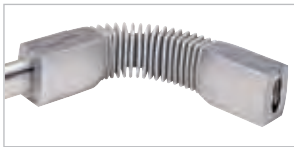
120~			
		10A max.	
		Alu	
L/W/H: 6.6/1.2/0.4 inch			

silver-grey/1 pce. 184022

2 End caps incl.

Easytec II® End caps

silver-grey/2 pce. 184142

Easytec II® Flex connector

120~			
L/W/H: 8.5/1.2/1.6 inch			

silver-grey/1 pce. 184302

Easytec II® Insulated connector

application for 2 separate power circuits			

silver-grey/1 pce. 184172

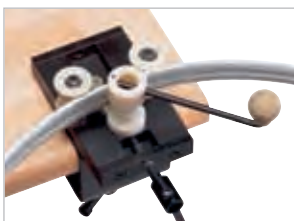
Easytec II® Connector

120~			

silver-grey/1 pce. 184032

Feed-in

120~			
L/W/H: 3.5/3.0/2.4 inch Cable-L: 15.7 inch			
		Alu/ Glass	

Easytec II® Feed-in
silver-grey/1 pce. 184002**Bending machine**

for circle- Ø: > 19.7 inch			

184000